

SUGANUMA
OVERHEAD CATENARY FITTINGS



FOR A BETTER WORLD AND A HAPPIER LIFE

Suganuma Co., Ltd. has been engaged in the work of railway transportation and power supply, which are the most important social infrastructures, for more than 130 years since its establishment in 1893, and has contributed to the improvement of people's lives. Thanks to many customers, we are now able to grow into a company that supports railways not only in Japan but around the world, including Asia.

We have a corporate philosophy of "FOR A BETTER WORLD AND A HAPPIER LIFE" At the same time as we want to contribute to society through our daily work and make efforts to improve the world as much as possible, the lives of all people must be absolutely happy, and our work is the happiness of people. We want you to be connected to.

We always work earnestly and seriously, and pledge to do our utmost to ensure that our attitude is recognized by our customers and the world.



Nobuyuki Suganuma



Company Name Suganuma Co., Ltd.

Business Initiation March 27, 1893

Foundation December 1, 1939

Capital 96,000,000 yen

Representative President and CEO, Nobuyuki Suganuma

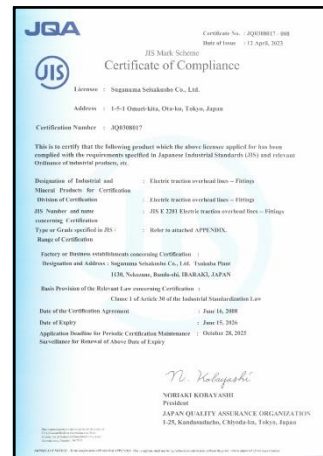
Business Content Design, Manufacture and Sale of Overhead Catenary Fittings.

Office Tokyo Head Office
Shizuoka Office / Nagoya Office / Osaka Office / Kyushu Office
Tsukuba Factory

Certification

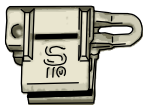


ISO9001 : 2015



JIS E 2201

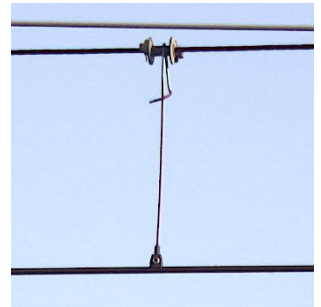
Products



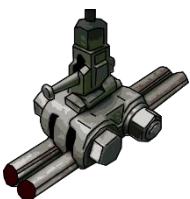
Hanger Ear Type B



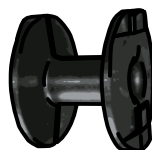
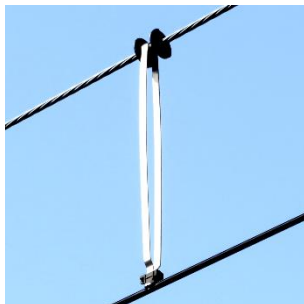
Hanger Ear Type D



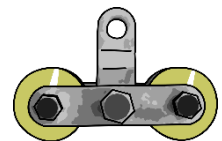
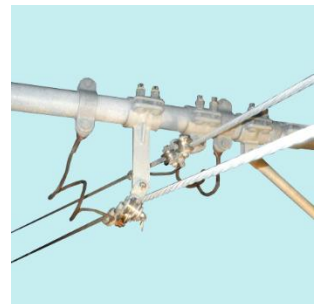
Hanger Ear for Shinkansen



Double Ear



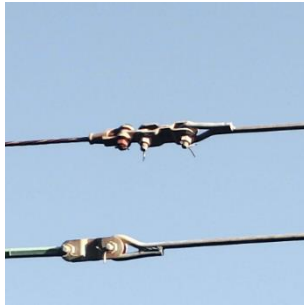
Messenger Wire Protector



Messenger Wire Suspension Pulley



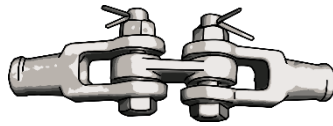
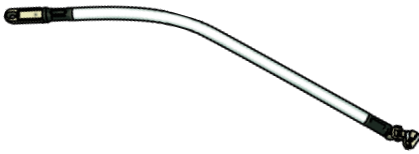
Pull-Off Fitting



Termination Fitting



Cable Support Bracket



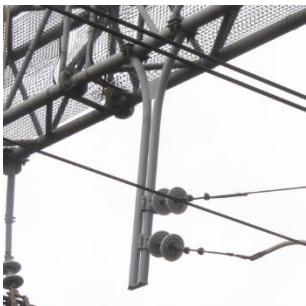
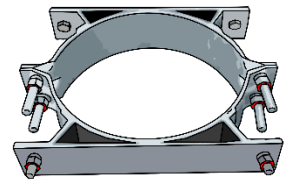
Connector Fitting



Feeding Branch



Pole Band



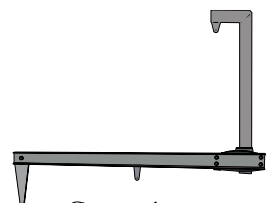
Drop Arm



Cantilever



Cross Arm



Our Main References

Japan



Hokkaido Shinkansen
Aomori — Hakodate



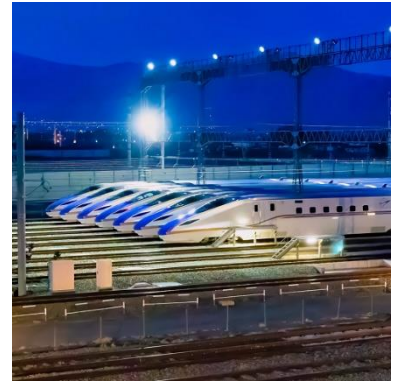
Since 2016
Operating Speed : 260 km/h
Line Length : 148.9 km
Catenary System :
Compound, PHC Simple

Tohoku Shinkansen
Tokyo — Aomori



Since 1982
Operating Speed : 320 km/h
Line Length : 674.9 km
Catenary System :
Simple, Heavy Compound,
CS Simple, PHC Simple

Hokuriku Shinkansen
Takasaki — Kanazawa



Since 1997
Operating Speed : 269 km/h
Line Length : 345.5 km
Catenary System :
CS Simple, PHC Simple

Tokaido/Sanyo Shinkansen
Tokyo — Osaka — Hakata



[**Tokaido**] Since 1964
Operating Speed : 285 km/h
Line Length : 552.6 km
[**Sanyo**] Since 1972
Operating Speed : 300 km/h
Line Length : 664.0 km
Catenary System :
Heavy Compound

Kyushu Shinkansen
Hakata — Kagoshima



Since 2004
Operating Speed : 260 km/h
Line Length : 288.9 km
Catenary System :
CS Simple, PHC Simple

Conventional Lines



Since 1895
Max Speed : 160 km/h or less
Total Line Length :
About 22,000 km

Overseas



Indonesia Railway



Taiwan High Speed Rail



Vietnam Railway



<Products Offered>

- Hanger Ear
- Double Ear
- Connector Clamp
- Steady Arm
- Crossing Fitting
- Strap
- Pole band
- Drop Arm
- Cross Arm
- Cantilever

And So Forth

<Products Offered>

- Hanger Ear
- Double Ear
- Pull-off Fitting
- Steady Arm
- Insulated Rod
- Feeding Branch
- Connector Fitting
- Yoke
- Pole Band
- Drop Arm

And So Forth

<Products Offered>

- Hanger Ear
- Double Ear
- Insulator Fitting
- Messenger Wire Protector
- M.W Suspension Pulley
- Pull-off Fitting
- Supporting Fitting
- Connector Fitting
- Crossing Clamp
- Cantilever

And So Forth

Machine & Equipment

Cutting

Band Saw
Flat Steel Cutting
Round Bar Cutting
Shearing



Pressing

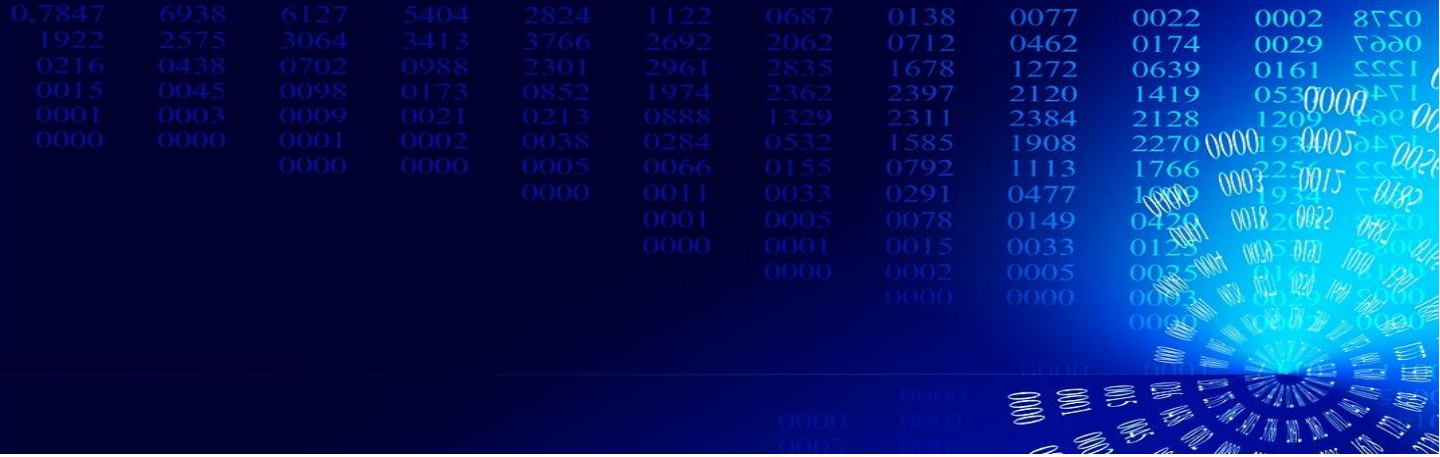
400t Press
200t Press
80t Press
Heating Furnace



Welding

Welding Robot
MIG/MAG Welder
Spot Welder
Semi-automatic Welder





Processing

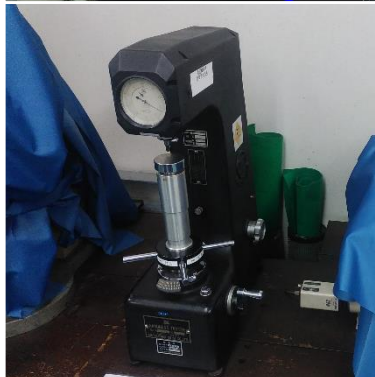
- Forming Machine
- Machining Center
- Bender
- Coating Plant

Measuring

- Coordinate Measuring Machine
- Hardness Tester
- Metallurgical Microscope
- Projector

Testing

- Amsler Testing Machine
- Simulated Catenary
- Electrical Test Machine
- Vibration Test Machine





Our Main Clients

Bureau of Transportation Tokyo Metropolitan Government

Central Japan Railway Company

Doden Co., Ltd.

East Japan Railway Company

Fujiyuko Co., Ltd.

Fukuoka City Transportation Bureau

Hankyu Hanshin Denki System K.K.

Hitachi, Ltd.

Hokkaido Railway Company

Japan Freight Railway Company

Japan Railway Construction Transport and Technology Agency

Kajima Corporation

KEPCO The Kansai Electric Power Co., Inc.

JR Kyushu Electric System Company

Kyushu Railway Company

Maeda Corporation

Ministry of Defense

NESCO

Nippon Densetsu Kogyo Co., Ltd.

Nippon Rietec Co., Ltd.

Nippon Tetsudo Kozai Co., Ltd.

Nishimatsu Construction Co., Ltd.

Nishi-Nihon Tech Co., Ltd.

Obayashi Corporation

Odakyu Electric Railway Co., Ltd.

Osaka Municipal Transportation Bureau

Shikoku Railway Company

Shimizu Corporation

Shinsei Technos Co., Ltd.

Taisei Corporation

TEPCO

Tobu Railway Co., Ltd.

Toho Electrical Construction Company

Tokyo Metro Co., Ltd.

Tokyu Corporation

Total Electric Management Service Co., Ltd.

Transportation Bureau, City of Nagoya

Wako Filter Technology Ltd.

Wako Techno Ltd.

West Japan Railway Company

And So Forth



History

- 1893** Suganuma was founded as an independently-operated business in Tokyo
Conducted press casting, welding, sales and manufacturing of products.
- 1916** Received orders for electric train line hardware and communication equipment from The Ministry of Communications and Transportation.
- 1918** Received orders for electric train line hardware from the Ministry of Railways.
- 1939** Made an organization change as a stock company with capital of 188,000 yen.
- 1952** Obtained the JIS 1690 certification for electric train line hardware from the Ministry of International Trade and Industry.
- 1953** Obtained the JIS 1690-1 for an additional item from the Ministry of International Trade and Industry.
- 1959** Relocated the head office and the Mita Factory to Omorinishi, Ota Ward, Tokyo.
- 1965** Opened the Osaka Office.
- 1969** Opened the Nagoya Office.
- 1974** Opened the Kyushu Office.
- 1982** Capital increased to 96,000,000 yen.
- 1993** Relocated the Omori Factory to Bando City, Ibaraki (previous Iwai City).
- 1993** Relocated the head office to 3-4-4, Omorikita, Tokyo.
- 1998** Obtained the JIS mark display certification (JIS E2201).
Certification number: 398010.
- 2008** Obtained the new JIS mark display system certification (JIS E2201).
Certification number: JQ0308017.
- 2009** Obtained ISO9001 certification (JSAQ2560).
- 2013** Relocated the head office to 1-5-1, Omorikita, Tokyo.
- 2015** Opened the Shizuoka Office.
- 2015** Relocated the Kyushu Office to Matsubara, Moji-ku, KitaKyushu City, Fukuoka.

SUGANUMA CO., LTD.

1-5-1, Omorikita, Ota-ku, Tokyo, Japan

TEL +81-3-3762-2771

URL <http://www.suganuma-ss.co.jp>

E-mail contact@suganuma-ss.co.jp



Product Catalog